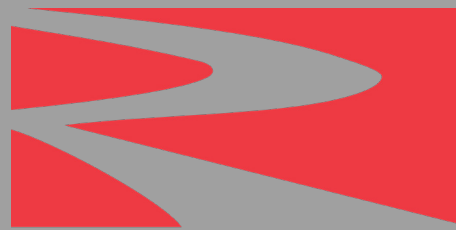


Precast - Steel

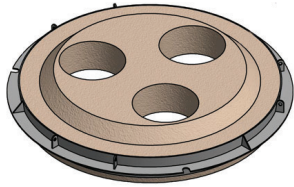


RESCO[®]
PRODUCTS, INC.

www.RescoProducts.com

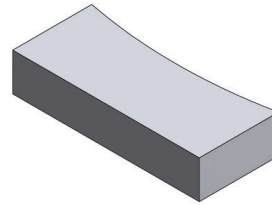
Precast Steel

EAF DELTA



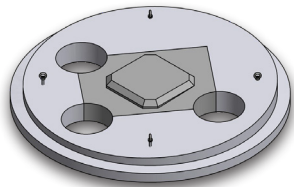
Uniform 80 CLC 102
Uniform 85LCXC
Uniform 90 ARS
Uniform 95NCS

EAF BREAST BLOCK



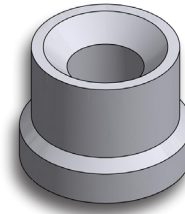
Uniform 90 ARS
Unicrete 98LCXC

CAST LADLE BOTTOM



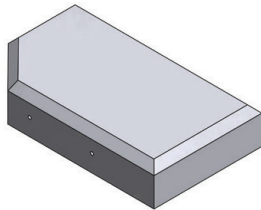
Uniform 80 LCL 102
Uniform 85ULM,
Uniform 85LCXC

WELL BLOCKS



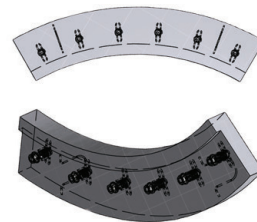
Uniform 90ARS
Vibrocast ASC 8LTCC
Unicrete 98LCXC

CAST LADLE IMPACT PAD



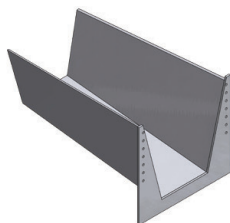
Uniform 90ARS
Vibrocast ASC 8LTCC
Uniform 97
Unicrete 98LCXC

LADLE LIP SHAPES



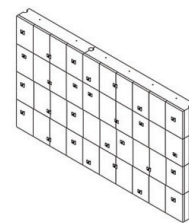
Mighty Fibre B
Uniform 70LC

EAF CAST RUNNER



Uniform 85LC
+2% Chrome
Uniform 95NCS

SOAKING PIT MODULAR WALLS



Mighty Fibre B
Uniform 70LC

Mighty Fibre B

Uniform 28 LI

Uniform 50 Flowz

Uniform 65LC

Uniform 70LC

Uniform 80 CLC 102

Uniform 85LCXC

Uniform 85 ULM

Uniform 90 ARS

Uniform 95NCS

Uniform 97

Uniform FS97

Unicrete 28D

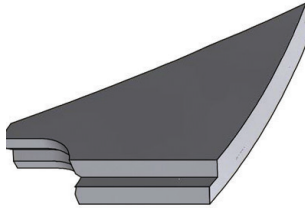
Unicrete 90 ARS

Unicrete 98LCXC

Vibrocast ASC 8LTCC

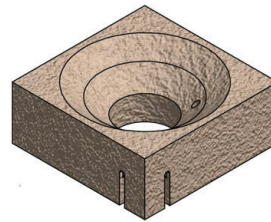
Precast Steel

AOD TUYERE PADS



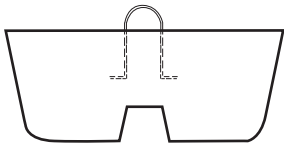
Vibrocast ASC 8LTCC
Unicrete 90ARS

BURNER BLOCK



Uniform 70 LC

TUNDISH BAFFLES



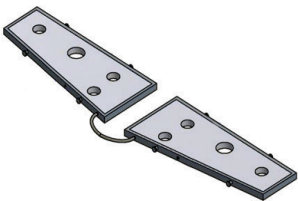
Uniform 50 Flowz
Unicrete 28D

TAPHOLE SLEEVE



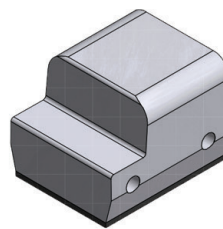
Uniform 80 CLC 102
Uniform 90 ARS

TUNDISH COVER



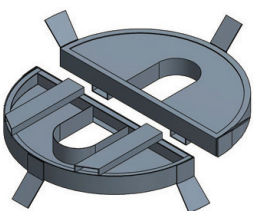
Uniform 50 Flowz
Uniform 65LC
Uniform 70LC

COKE OVEN DOOR PLUGS



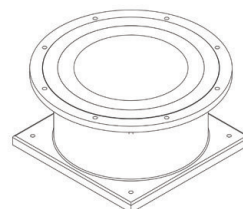
Uniform 50 Flowz
Uniform 28 LI
Uniform FS97

LADLE COVER



Uniform 50 Flowz

COKE OVEN STANDPIPES



Uniform 50 Flowz
Uniform 28 LI

Precast - Steel

Product Description

Mighty Fibre B	MIGHTY FIBRE B is a precast shape made with a castable-bonded, metallic fiber composite for added strength and spalling resistance. MIGHTY FIBRE B precast shapes can be used in applications where mechanical abuse and thermal cycling are normal operating conditions.
Uniform 28 LI	Uniform 28 LI is a precast shape made with a low iron casting mix based on high fired alumina/silica aggregate of approximately 60% mullite content, bonded with low iron calcium aluminate cement. Uniform 28 LI shapes can be used in coke oven, blast furnace and other applications where reducing conditions occur.
Uniform 50 Flowz	Uniform 50 Flowz is a precast shape made with a self-flow, low cement castable.
Uniform 65 LC	UNIFORM 65 LC is a precast shape made with a high strength, low moisture castable based on hard fired alumina/silica aggregate. UNIFORM 65 LC is designed for maximum resistance to abrasion and erosion.
Uniform 70 LC	UNIFORM 70 LC is a precast shape made with an 70% Alumina, Low Cement Castable. For added strength and spalling resistance, UNIFORM 70 LC is available with stainless steel fiber additions.
Uniform 80 CLC 102	UNIFORM 80 CLC 102 is a coarse-grained, low cement 80% alumina cast shape. Available with up to 3% stainless steel fiber additions and different grades of stainless steel fiber, such as 304 grade, 310 grade, and HCA grade.
Uniform 85 LCXC	UNIFORM 85 LCXC is a precast shape made with an Coarse Grain-containing 85% Alumina, Low Cement Castable. For added strength and spalling resistance, UNIFORM 85 LCXC is available with stainless steel fiber additions.
Uniform 85 ULM	
Uniform 90 ARS	Uniform 90 ARS is a precast shape made with a tabular alumina/spinel, low moisture castable. The addition of spinel significantly improves this castables hot strength and resistance to slag attack.
Uniform 95 NCS	Uniform 95 NCS is a precast shape utilizing a tabular alumina / spinel cement free castable.
Uniform 97	UNIFORM 97 is a silica-free, low cement, high purity alumina cast shape. This cast shape can be used in high temperature applications and where a silica-free, high purity alumina products are applicable.
Uniform FS97	
Unicrete 28D	
Unicrete 90 ARS	UNICRETE 90 ARS is a tabular alumina/spinel, low moisture castable. The addition of spinel significantly improves this castable's hot strength and resistance to slag attack.
Unicrete 98 LCXC	UNICRETE 98 LCXC is a silica-free, low cement, high purity alumina castable. This castable can be used in high temperature applications and where a silica-free, high purity alumina castable is applicable. UNICRETE 98 LCXC is installed by vibration casting methods only.
Vibrocast ASC 8LTCC	VIBROCAST ASC-8LT (C-C) is a high purity, low-cement, alumina-spinel castable designed to provide maximum resistance to molten steel and steelmaking slags. VIBROCAST ASC-8LT (C-C) is designed for production of cast shapes or monolithic placement in steel ladles and related steelmaking environments. This product should be installed by vibration casting only.

Mighty Fibre B

Uniform 28 LI

Uniform 50 Flowz

Uniform 65LC

Uniform 70LC

Uniform 80 CLC 102

Uniform 85LCXC

Uniform 85 ULM

Uniform 90 ARS

Uniform 95NCS

Uniform 97

Uniform FS97

Unicrete 28D

Unicrete 90 ARS

Unicrete 98LCXC

Vibrocast ASC 8LTCC



RESCO[®]
PRODUCTS, INC.

www.RescoProducts.com

One Robinson Plaza
6600 Steubenville Pike #300
Pittsburgh, PA 15205

888-283-5505
Edited 2019

